



EU - OSHA representative in Romania.

Activities, results and promotion

Simona-Clara Barsan, PhD, Eng.
Technology Transfer Center CENTI Cluj-Napoca
BISNet Transylvania consortium



Romanian National Meeting

Cluj-Napoca, 12-13 November 2015

Partnership between EEN and EU-OSHA – The beginnings

2009 – Declaration of Intention for Cooperation between DG Internal Market, Industry, Entrepreneurship and SMEs (DG GROW) and EU-OSHA, which opened the doors to a major and strategic partnership with Enterprise Europe Network.

EEN ROLE:

- ⇒ action tool aimed for **raising EU-OSHA visibility**;
- ⇒ **raise awareness of SMEs** and micro-enterprises regarding OSH and risk assessment problems;
- ⇒ **feedback report to EU-OSHA** about the SMEs needs regarding the improvement of OSH conditions.

Romanian National Meeting
Cluj-Napoca, 12-13 November 2015

ABOUT THE ROMANIAN EEN-OSH AMBASSADOR

2011-2014 – EEN-OSH Romanian Ambassador – member of the Communication Partnerships Working Group (CPWG) EU-OSHA project, that comprised:

- ▶ 7 FOP (AT, DE, GR, ET, LT, NO, SP)
- ▶ 6 EEN (BE, CZ, DE, ES, RO, UK)

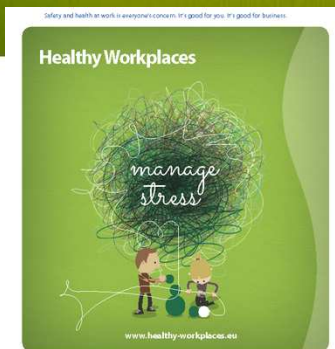
EEN-OSH AMBASSADOR TASKS

- ⇒ **Coordinator**: ⇒ represent the link at national level between EU-OSHA, FOP and national Network organisations.
- ⇒ **Promoter**: ⇒ relay the information they get from EU-OSHA and/or FOP to national Network members and their client SMEs.
- ⇒ **Rapporteur**: ⇒ report back to EU-OSHA on Enterprise Europe Network activities aimed at raising awareness on OSH.

Romanian National Meeting
Cluj-Napoca, 12-13 November 2015

2014-2015 Campaign

**Healthy
Workplaces
Manage
Stress**



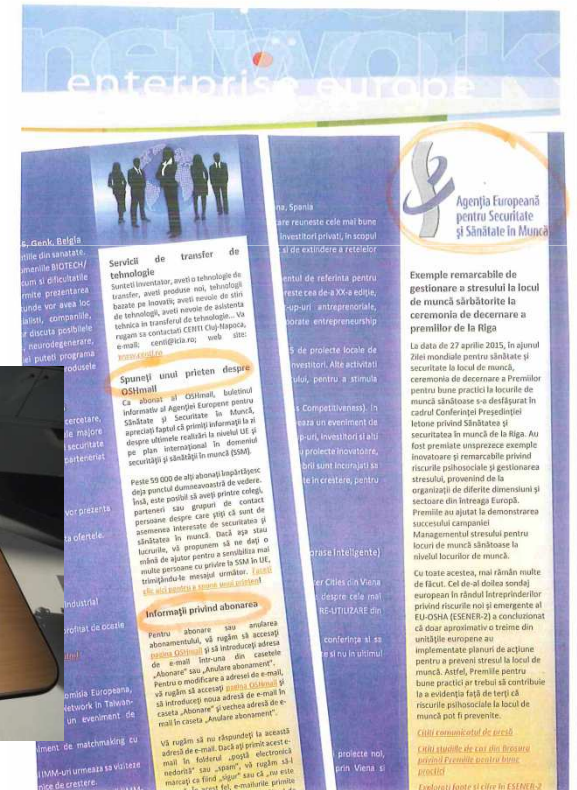
Campaign Guide
Managing stress and psychosocial risks at work



EU-OSHA - EEN Romania – SMEs LINK

EU-OSHA Promotion

- 👉 in own e-publications
(abonare la OSH-mail, articole traduse)
- 👉 in stands in fairs
- 👉 during company visits
(distribution of OSH campaign promotional materials)



Organising OSH promotion events

- Workshops, conferences
on OSH themes



- OSH Conference
organised
within SME Week (2014)



RESULTS IN 2014



~ 500 SMEs participating in OSH events and conferences



~ 2,000 sets of OSH promotional materials disseminated to SMEs



~ 10,000 SMEs receiving OSH electronic information (via email, newsletter, etc.)



~ 10,000 SMEs informed in written press about EU-OSHA and OSH issues

Annual Guidance Note 2015

Elective EU policy themes (Network partners or Sector Groups) based on ongoing cooperation and new proposals by Network Partners:

B. Elective EU policy themes (taking account of local needs)
Safety and health

A further optional activity for Network partners is [information and awareness-raising activities on work place safety and health in cooperation with EU-OSHA](#). A specific focus for 2015 is their campaign on the management of psychosocial risks – ‘Healthy Workplaces Manage Stress’

Romanian National Meeting
Cluj-Napoca, 12-13 November 2015

Useful links:

- <https://osha.europa.eu/>
- <https://www.healthyworkplaces.eu/en>



Business Support on Your Doorstep

Contact person:

**Simona-Clara Barsan, PhD, Eng.
OSH-EEN ROMANIA Ambassador**

BISNet Transylvania consortium

**INCDO-INOE2000, ICIA subsidiary
Technology Transfer Center CENTI**

67, Donath St., Cluj-Napoca
tel: 0264-420590; fax: 0264-420667
mail: centi@icia.ro

